



OPEN

Bulk induced phase transition in driven diffusive systems

Yu-Qing Wang¹, Rui Jiang¹, Anatoly B. Kolomeisky² & Mao-Bin Hu¹

SUBJECT AREAS:

STATISTICAL PHYSICS

NONLINEAR PHENOMENA

PHASE TRANSITIONS AND
CRITICAL PHENOMENA

¹State Key Laboratory of Fire Science and School of Engineering Science, University of Science and Technology of China, Hefei 230026, China, ²Department of Chemistry, Rice University, Houston, TX 77005-1892, USA.

Received
29 April 2014

Accepted
9 June 2014

Published
26 June 2014

This paper studies a weakly and asymmetrically coupled three-lane driven diffusive system. A non-monotonically changing density profile in the middle lane has been observed. When the extreme value of the density profile reaches $\rho=0.5$, a bulk induced phase transition occurs which exhibits a shock and a continuously and smoothly decreasing density profile which crosses $\rho=0.5$ upstream or downstream of the shock. The existence of double shocks has also been observed. A mean-field approach has been used to interpret the numerical results obtained by Monte Carlo simulations. The current minimization principle has excluded the occurrence of two or more bulk induced shocks in the general case of nonzero lane changing rates.

Correspondence and requests for materials should be addressed to R.J. (rjiang@ustc.edu.cn)

Driven diffusive system is a rewarding research topic in recent decades, which exhibits non-vanishing current even in the steady state and has served as fruitful testing grounds for fundamental research in non-equilibrium physics^{1–5}. The driven diffusive systems exhibit many surprising or counterintuitive features, given our experiences with equilibrium systems, e.g., spontaneous symmetry breaking, phase separation, etc.^{6–10}.

The boundary induced phase transition is another non-equilibrium phenomenon^{11–14}. For the case of vanishing right boundary density, Krug postulated a rather general maximal-current principle that the system tries to maximize its stationary current¹¹. The maximal-current principle has later been generalized to the extremal current principle^{12,13}

$$q = \begin{cases} \max q(\rho), \rho_- > \rho_+ \\ \min q(\rho), \rho_- < \rho_+ \end{cases} \quad (1)$$

Here ρ_- (ρ_+) is the constant effective density of the left (right) reservoir from which particles are flowing into (out of) the system and ρ is system density, which is defined as the occupancy probability of sites. The microscopic details of the system only determine the functional form of the current $q(\rho)$ and the effective boundary densities.

Motivated by facts such as the unidirectional motion of many motor proteins along cytoskeletal filaments, in which motors advance along the filament while attachment and detachment of motors between the cytoplasm and the filament occur, the constraint of the conserved dynamics in the bulk in the driven diffusive system has been relaxed to consider random particle attachments and detachments in the bulk¹⁵. The resulting dynamics leads to a phase coexistence of low and high density regions separated by a shock.

The driven diffusive systems have also been extended to include the possibility of transport on multiple parallel lanes to describe phenomena such as the extraction of membrane tubes by molecular motors, macroscopic clustering phenomena, car traffic and so on (see e.g. Refs. [16–29] and references therein), in which the boundary induced phase transitions still could be observed.

This paper studies a weakly and asymmetrically coupled three-lane totally asymmetric simple exclusion process (TASEP), and reports a bulk induced phase transition. Our model is defined in a three-lane lattice of $N \times 3$ sites, where N is the length of a lane (see Fig. 1). For each time step, a site is chosen at random. A particle at site i and lane j can jump with rate 1 to site $i + 1$ if it is unoccupied. Otherwise, if site $i + 1$ is occupied, the particle jumps to site i on lane $j + 1$ with rate ω_A and to site i on lane $j - 1$ with rate ω_B ($\omega_B \neq \omega_A$), provided the target site is unoccupied. Obviously, $\omega_B = 0$ for lane 1 and $\omega_A = 0$ for lane 3. We use this rule to mimic the feature of cars, since cars usually will not change lane when unhindered. The model was also stimulated by fast and strong motor proteins, like kinesins, which do not change lines frequently. However, these details do not change the physics of the observed phenomena. Without this rule (i.e., a particle can change lanes provided the target site is empty) the system dynamics do not qualitatively change.

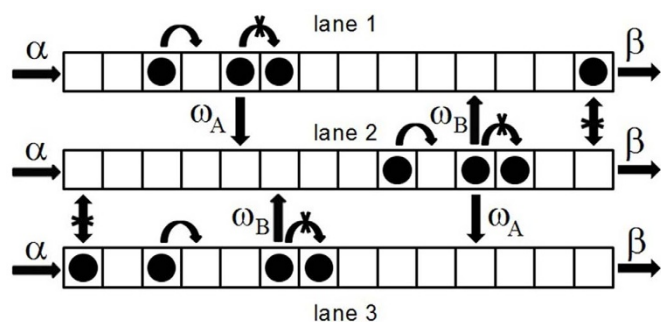


Figure 1 | Sketch of the three-lane TASEP. The arrow shows allowed hopping and the cross shows prohibited hopping.

The asymmetric coupling makes the middle lane different from two other lanes, and bulk induced phase transition occurs on this lane. At the boundaries, a particle enters from the left boundary with rate α , and is removed from the right boundary with rate β . As in previous studies, a weakly coupling is considered in which $\omega_A N = \Omega_A$ and $\omega_B N = \Omega_B$ are kept constant. We have studied the model using both mean-field calculation (see section Method) and Monte Carlo simulations.

Results

Figure 2 shows a typical phase diagram of a three-lane system, in which an asymmetrical set of parameters $\Omega_A = 10$ and $\Omega_B = 0.1$ is adopted. In the phase diagram, XYZ stands for the state of the three lanes. L(H) means that the corresponding lane j is in low (high) density phase $\rho_j < 0.5$ ($\rho_j > 0.5$), S means that there is a shock on the lane (shocks S_1 and S_2 denote bulk induced shocks as discussed below), D means that there are two shocks on the lane, C means that the density profile is a continuously and smoothly decreasing one and crosses the density $\rho = 0.5$. The transitions among LLL, LLS, LSS, LLH, LSH, LHH, SSH, SHH, HHH can be easily understood as boundary induced phase transitions, see e.g., Refs. [19,20]. For instance, when $\rho_3(1)$, the density at the right end on lane 3, increases to $\min(\beta, 1/2)$ in the LLL phase, a shock is induced from the right boundary on this lane and thus the LLL phase transits into LLS phase. Fig. 3 shows the typical density profiles of these states.

We focus on the density profiles in the LLS state. Fig. 4(a) shows several typical density profiles with the fixed value $\beta = 0.276$. Note that in the LLS state, due to existence of a shock on the third lane, the density profile is not smooth in the middle lane at the shock location,

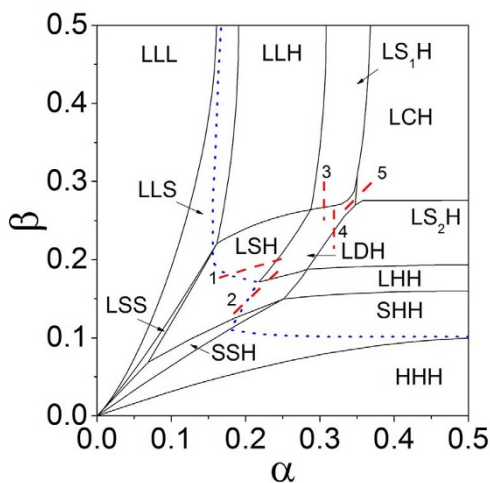


Figure 2 | Phase diagram of the three-lane TASEP obtained from mean-field calculation. The parameters $\Omega_A = 10$ and $\Omega_B = 0.1$. Details about the dotted lines and the dashed lines 1–5 are in the text.

which separates the density profile into two parts. When α is left to the dotted line in the phase diagram, the density profile in the downstream part is increasing with x . With the increase of α , the shock moves left, so that the downstream part expands. Across the dotted line, the density profile in the downstream part becomes non-monotonically changing. This is because $(J_{1 \rightarrow 2} + J_{3 \rightarrow 2}) - (J_{2 \rightarrow 1} + J_{2 \rightarrow 3})$ begins to change sign with x in the downstream part. Here $J_{k \rightarrow j}$ means flow from lane k to lane j . In the LLH state, the shock has been expelled out from the left end, and the density profile is always monotonically changing. On the boundary between LLH and LS₁H, the extreme value of the density profile on lane 2 reached $\rho = 0.5$. As a result, a bulk induced phase transition occurs, which exhibits a shock (S_1) as well as a continuous and smooth density profile that crosses $\rho = 0.5$ downstream of the shock. Note that when $\rho_2 = 0.5$, the coefficient $(1 - 2\rho_2)$ in eq.(11) equals zero. Consequently, the mean field equations (10)–(12) cannot be used to solve the density profile in the vicinity of $\rho_2 = 0.5$, because the numerical solution diverges. We have used equations (7)–(9) instead.

Similarly, in the SHH state, the density profile located in the upstream part of the middle lane gradually becomes non-monotonically changing when (α, β) approaches the corresponding dotted line. Across the boundary between LHH and LS₂H, a bulk induced shock (S_2) as well as a continuous and smooth density profile that crosses $\rho = 0.5$ upstream of the shock appears, see Fig. 4(b).

Here we call “bulk induced” phase transition because the shock emerges in the bulk. Note that there is another viewpoint, in which lanes 1 and 3 are regarded as heterogeneous reservoirs for lane 2. Since the heterogeneity on lanes 1 and 3 comes from boundaries, and thus the phase transitions are regarded as intrinsically induced by boundaries.

We study the density profiles in the LS₁H state. Fig. 5(a) shows several density profiles with $\beta = 0.296$ is fixed. With the increase of α , the shock gradually moves left. Across the boundary between LS₁H and LCH, the shock is expelled out from the left end, and only the continuous and smooth density profile is left in the middle lane. Similarly, the shock is expelled out from the right end in the LS₂H phase when across the boundary between LS₂H and LCH, see Fig. 5(b).

Figs. 6 (a) and (b) show the density profiles in the LSH phase, in which (α, β) changes along dashed lines 1 and 2 in the phase diagram, respectively. When (α, β) is left of the dotted line, the density profile is increasing both upstream and downstream of the shock. However, when across the dotted line, the density profile becomes non-monotonic upstream (downstream) of the shock. On the boundary between LSH and LDH, the maximum (minimum) of density profile reaches $\rho = 0.5$. When across the boundary, the bulk induced shock appears upstream (downstream) of the first shock and thus two shocks exist simultaneously in the middle lane.

Figs. 6(c) and (d) show the density profiles in the LS₁H and LS₂H phase, in which (α, β) changes along dashed lines 3 and 4, respectively. On approaching the boundary between LS₁H (LS₂H) and LDH, $\rho_2(1)$ ($\rho_2(0)$) gradually approaches β ($(1 - \alpha)$). Across the boundary, a shock is induced from the right (left) boundary, thus, double shocks emerge.

Finally, in the LDH phase, when (α, β) changes along dashed line 5, the left shock moves toward left and the right shock moves right. On the boundary between the LDH phase and the LCH phase, the two shocks are expelled from the system, simultaneously, see Fig. 7.

Discussion

Now we interpret why only one bulk induced shock is triggered. Suppose there are two bulk induced shocks. As a result, the density profile crosses $\rho = 0.5$ twice, i.e., there are two locations x_1 and x_2 ($x_1 < x_2$) at which $\rho_2 = 0.5$. Note that for the double shocks in the LDH state, the density profile crosses $\rho = 0.5$ only once. Thus, the double shocks can exist.

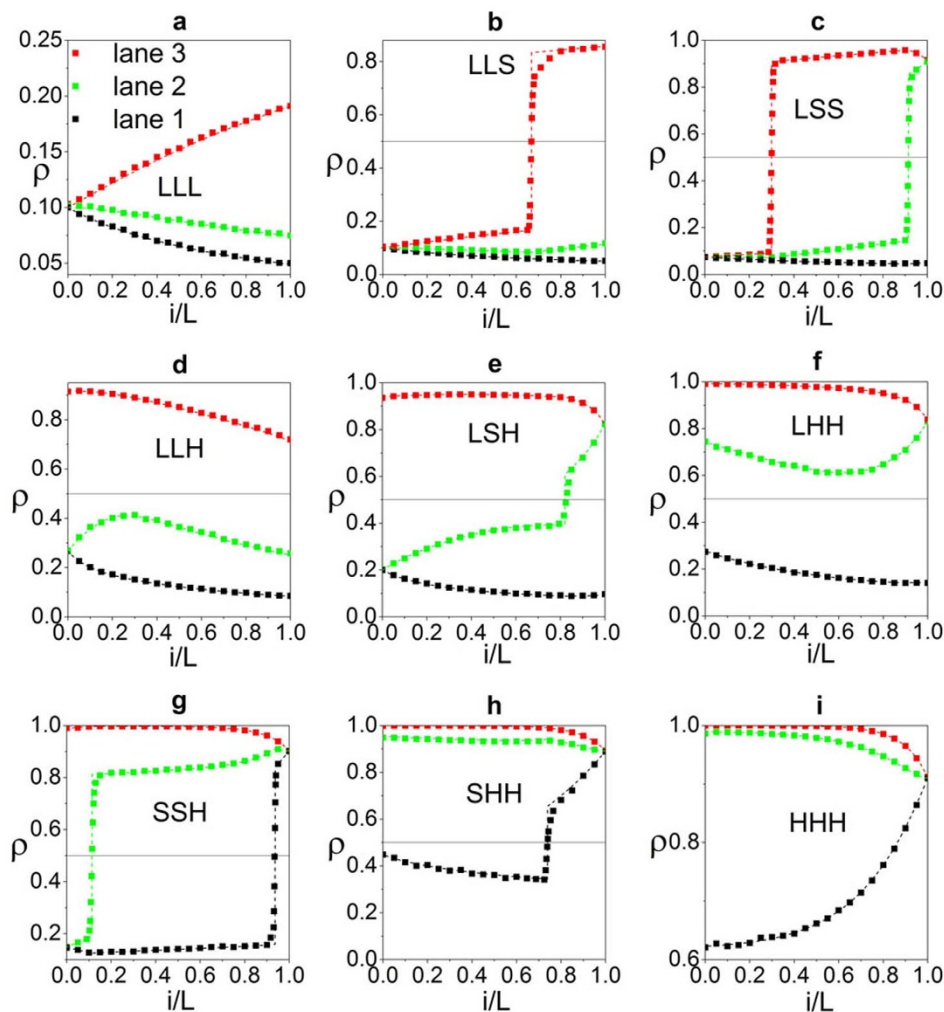


Figure 3 | Typical density profiles. (a) LLL, (b) LLS, (c) LSS, (d) LLH, (e) LSH, (f) LHH, (g) SSH, (h) SHH, (i) HHH. The scatter data are simulation results, and the dashed lines are mean field results. $(\alpha, \beta) = (0.1, 0.25), (0.1, 0.15), (0.074, 0.087), (0.268, 0.286), (0.2, 0.18), (0.278, 0.166), (0.15, 0.098), (0.45, 0.11), (0.45, 0.09)$ in (a) – (i), respectively. In the simulation, the system size $N = 20000$.

Now, we have the following equation at the two locations according to the current conservation principle

$$\rho_1(1 - \rho_1) + \rho_3(1 - \rho_3) = c \tag{2}$$

where $0 \leq c \leq 0.5$ stands for a constant. Substituting $\rho_2 = 0.5$ into eq.(11), we have

$$-\Omega_A(1 - \rho_3) + 2\Omega_B\rho_3^2 - \Omega_B(1 - \rho_1) + 2\Omega_A\rho_1^2 = 0 \tag{3}$$

at locations x_1 and x_2 . Suppose $\Omega_A > \Omega_B$, then one has $\rho_1 < 0.5$ and $\rho_3 > 0.5$ at the two locations. Thus, from eq.(2), ρ_3 can be solved

$$\rho_3 = \frac{1 + \sqrt{1 - 4[c - \rho_1(1 - \rho_1)]}}{2} \tag{4}$$

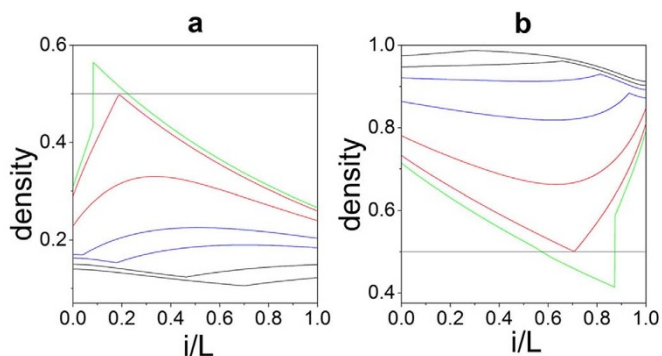


Figure 4 | The density profiles of the middle lane (mean-field results). (a) System transits from LLS to LS_1H . Parameters are $\beta = 0.276, \alpha = 0.14, 0.15, 0.163, 0.17, 0.229, 0.29, 0.308$ for curves from bottom to top. (b) System transits from SHH to LS_2H . Parameters are $\alpha = 0.31, \beta = 0.088, 0.098, 0.108, 0.128, 0.152, 0.189, 0.206$ for curves from top to bottom.

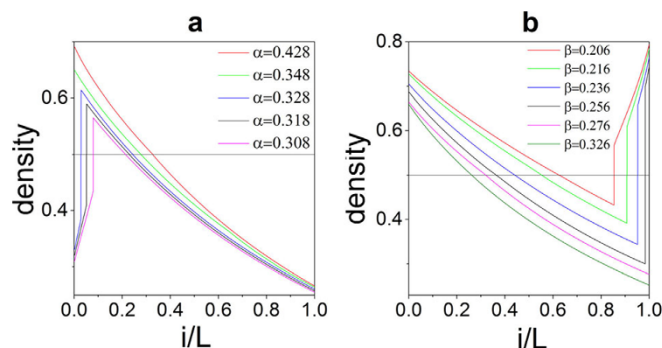


Figure 5 | The density profiles of the middle lane (mean-field results). (a) System transits from LS_1H to LCH. The parameter $\beta = 0.296$. (b) System transits from LS_2H to LCH. The parameter $\alpha = 0.358$.

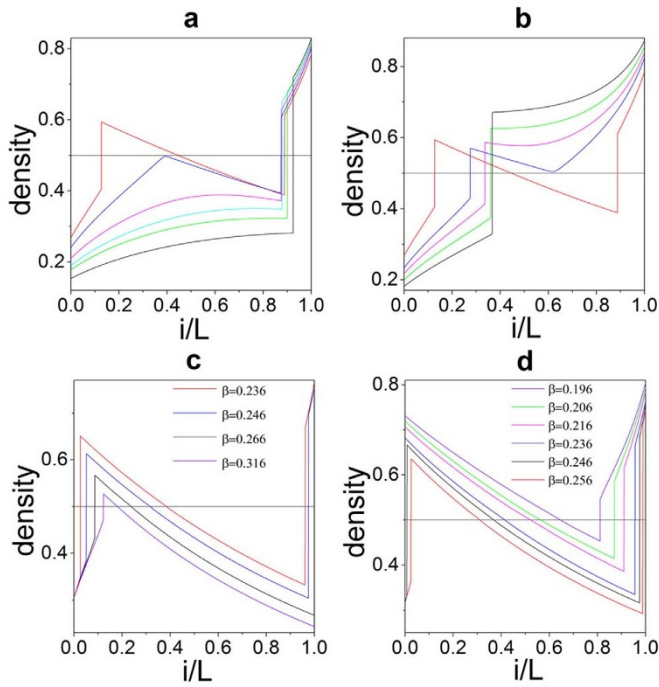


Figure 6 | The density profiles of the middle lane (mean-field results). (a) shows the transition from LSH to LDH along dashed line 1. Parameters are $(\alpha, \beta) = (0.154, 0.173), (0.178, 0.180), (0.190, 0.184), (0.211, 0.190), (0.241, 0.198)$ and $(0.268, 0.206)$ for curves from bottom to top at $x=0$. (b) shows the transition along dashed line 2. Parameters are $(\alpha, \beta) = (0.182, 0.128), (0.200, 0.145), (0.218, 0.161), (0.234, 0.175)$ and $(0.268, 0.206)$ for curves from top to bottom at $x=1$. (c) shows the transition from LS₂H to LDH along dashed line 3. The parameter $\alpha=0.305$. (d) shows the transition from LS₂H to LDH along dashed line 4. The parameter $\alpha=0.318$.

Substituting eq.(4) into (3), one has

$$f(\rho_1) \equiv -\Omega_A \left\{ 1 - \frac{1 + \sqrt{1 - 4[c - \rho_1(1 - \rho_1)]}}{2} \right\} + 2\Omega_B \left\{ \frac{1 + \sqrt{1 - 4[c - \rho_1(1 - \rho_1)]}}{2} \right\}^2 - \Omega_B(1 - \rho_1) + 2\Omega_A\rho_1^2 = 0 \quad (5)$$

Taking derivative to ρ_1 , we obtain

$$\frac{\partial f}{\partial \rho_1} = \frac{(1 - 2\rho_1)[\Omega_A + 2\Omega_B(1 + d)]}{d} + 4\Omega_A\rho_1 + \Omega_B \quad (6)$$

where $d = \sqrt{1 - 4[c - \rho_1(1 - \rho_1)]}$. Since $\rho_1 < 0.5$, $\frac{\partial f}{\partial \rho_1} > 0$ is always satisfied. This means that eq.(5) has at most one solution. Therefore, $\rho_1(x_1) = \rho_1(x_2)$ and $\rho_3(x_1) = \rho_3(x_2)$. When one lane-changing parameter equals 0, both $\rho_1(x)$ and $\rho_3(x)$ are monotonically changing with x . Therefore, $\rho_1(x_1) = \rho_1(x_2)$ and $\rho_3(x_1) = \rho_3(x_2)$ cannot be satisfied.

In the general situation that neither Ω_A nor Ω_B equals to 0, the section $x \leq x_1$ and the section $x \geq x_2$ can match each other and constitute a shortened system with length $1 - (x_2 - x_1)$, in which only one bulk induced shock exists. The mean-field analysis has shown that given the same values of α and β , the flow rate in a shortened system is larger than that in the original system, provided there exists one bulk induced shock in both systems. Thus, we argue that the current minimization principle excludes the occurrence of two or more bulk induced shocks.

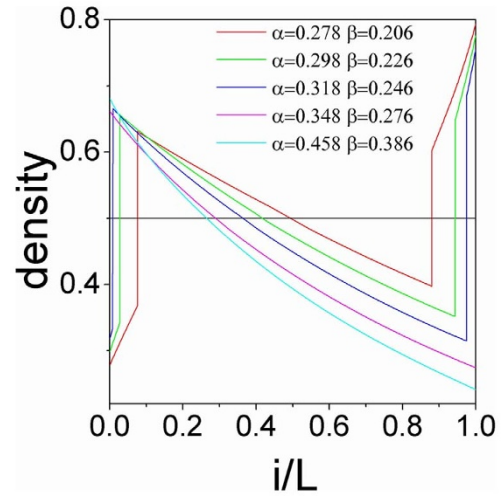


Figure 7 | The density profiles of the middle lane (mean-field results). System transits from LDH state to LCH state along dashed line 5.

Hinsch and Frey have studied a periodic one-dimensional exclusion process composed of a driven and a diffusive part, and identified bulk-driven phase transitions in a mesoscopic limit where both dynamics compete³⁰. Nevertheless, the system can be regarded as two sub-systems connecting together. Therefore, the bulk-driven phase transitions are essentially boundary induced ones.

In our system, we can also treat the location where the density profile crosses $\rho=0.5$ as a virtual boundary, which separates the system into two sub-systems. For the left sub-system, the effective exit rate for the middle lane is $\beta_{2,\text{eff}}=0.5$. For the right one, the effective entrance rate for the middle lane is $\alpha_{2,\text{eff}}=0.5$. Nevertheless, instead of a static boundary, the location of the virtual boundary in our system is self-tuned and determined by the values of the kinetic rates.

We also would like to point out that the existence of double shocks has been demonstrated when considering detachment and attachment of particles in the Katz-Lebowitz-Spohn process³¹. However, different from the double shocks in LDH state in our model, both shocks are boundary induced ones in Ref. [31].

Also note that, as pointed out in Ref. [16], when the minima of the current can be realized by several different densities simultaneously, multiple shocks can be observed, which separate the density profile into several flat segments with different densities corresponding to the minima. Nevertheless, the multiple shocks always emerge and disappear simultaneously. This is different from the double shocks in the present paper.

This paper only focuses on the three-lane TASEP. When the number of lanes further increases, the phase diagram will become much more complicated. The questions such as whether two or more bulk induced shocks could be observed simultaneously in a lane, whether bulk induced shocks can be observed simultaneously in different lanes, need to be investigated in the future work.

Methods

The hydrodynamic mean field equations of the system could be written as

$$\frac{\partial \rho_1}{\partial t} = -(1 - 2\rho_1) \frac{\partial \rho_1}{\partial x} - \Omega_A \rho_1^2 (1 - \rho_2) + \Omega_B \rho_2^2 (1 - \rho_1) \quad (7)$$

$$\frac{\partial \rho_2}{\partial t} = -(1 - 2\rho_2) \frac{\partial \rho_2}{\partial x} - \Omega_A \rho_2^2 (1 - \rho_3) + \Omega_B \rho_3^2 (1 - \rho_2) - \Omega_B \rho_2^2 (1 - \rho_1) + \Omega_A \rho_1^2 (1 - \rho_2) \quad (8)$$

$$\frac{\partial \rho_3}{\partial t} = -(1 - 2\rho_3) \frac{\partial \rho_3}{\partial x} - \Omega_B \rho_3^2 (1 - \rho_2) + \Omega_A \rho_2^2 (1 - \rho_3) \quad (9)$$



In the steady state, one has

$$(1 - 2\rho_1) \frac{d\rho_1}{dx} = -\Omega_A \rho_1^2 (1 - \rho_2) + \Omega_B \rho_2^2 (1 - \rho_1) \quad (10)$$

$$(1 - 2\rho_2) \frac{d\rho_2}{dx} = -\Omega_A \rho_2^2 (1 - \rho_3) + \Omega_B \rho_3^2 (1 - \rho_2) - \Omega_B \rho_2^2 (1 - \rho_1) + \Omega_A \rho_1^2 (1 - \rho_2) \quad (11)$$

$$(1 - 2\rho_3) \frac{d\rho_3}{dx} = -\Omega_B \rho_3^2 (1 - \rho_2) + \Omega_A \rho_2^2 (1 - \rho_3) \quad (12)$$

Here ρ_j denotes the density on lane j . Via rescaling the total length to unity (i.e., $x=i/L$), the boundary conditions $\rho_j(0)=\min(\alpha, 1/2)$ and $\rho_j(1)=\max(1-\beta, 1/2)$ should be imposed properly, depending on the specific state of the system. Via numerical solving equations (10) – (12) and/or equations (7) – (9), we can obtain the density profiles of the three lanes. Specifically,

In the LLL phase, one has $\rho_j(0)=\min(\alpha, 1/2)$ ($j=1,2,3$). Thus the density profiles of the three lanes can be obtained by numerical solving equations (10) – (12) from $x=0$ to $x=1$.

In the HHH phase, one has $\rho_j(1)=\max(1-\beta, 1/2)$ ($j=1,2,3$). Thus the density profiles of the three lanes can be obtained by numerical solving equations (10) – (12) from $x=1$ to $x=0$.

In the LLS phase, one still has $\rho_j(0)=\min(\alpha, 1/2)$. In this case, one needs to assume the location of the shock on lane 3, denoted as x_s . Then one numerically solves equations (10) – (12) from $x=0$ to $x=x_s$. Denote the density on lane 3 at $x=x_s$ as $\rho_3(x_s)$. One needs to change the density on lane 3 from $\rho_3(x_s)$ to $1-\rho_3(x_s)$ and then continues to numerically solve equations (10) – (12) from $x=x_s$ to $x=1$. If the choice of x_s is correct, then one would have $\rho_3(1)=\max(1-\beta, 1/2)$.

Similarly, in the LSS phase, one still has $\rho_j(0)=\min(\alpha, 1/2)$ and needs to assume the locations of the shocks on both lanes 2 and 3 to match $\rho_2(1)=\rho_3(1)=\max(1-\beta, 1/2)$.

In the LLH phase, one has $\rho_1(0)=\rho_2(0)=\min(\alpha, 1/2)$ and needs to assume the value of $\rho_3(0)$ to match $\rho_3(1)=\max(1-\beta, 1/2)$.

In the LSH phase, one has $\rho_1(0)=\rho_2(0)=\min(\alpha, 1/2)$ and needs to assume the location of the shock on lane 2 and the value of $\rho_3(0)$ to match $\rho_2(1)=\rho_3(1)=\max(1-\beta, 1/2)$.

In the SHH phase, one has $\rho_1(1)=\max(1-\beta, 1/2)$ and needs to assume the location of the shock on lane 1 to match $\rho_1(0)=\min(\alpha, 1/2)$.

In the SSH phase, one still has $\rho_1(1)=\max(1-\beta, 1/2)$ and needs to assume the locations of the shocks on both lanes 1 and 2 to match $\rho_1(0)=\rho_2(0)=\min(\alpha, 1/2)$.

In the LHH phase, one has $\rho_2(1)=\rho_3(1)=\max(1-\beta, 1/2)$ and needs to assume the value of $\rho_1(1)$ to match $\rho_1(0)=\min(\alpha, 1/2)$.

In the LCH phase, one has $\rho_1(0)=\min(\alpha, 1/2)$ and needs to assume the values of $\rho_2(0)$ and $\rho_3(0)$ to match $\rho_3(1)=\max(1-\beta, 1/2)$. Note that the solution is not unique. Due to current minimization principle, the solution corresponding to the minimum current is the correct one.

In the LDH phase, one has $\rho_1(0)=\rho_2(0)=\min(\alpha, 1/2)$ and needs to assume the two locations of the double shocks on lane 2 and the value of $\rho_3(0)$ to match $\rho_2(1)=\rho_3(1)=\max(1-\beta, 1/2)$. Still the solution is not unique and the current minimization principle determines the correct one.

- Schmittmann, B. & Zia, R. K. P. Driven diffusive systems. An introduction and recent developments. *Phys. Rep.* **301**, 45 (1998).
- Derrida, B. An exactly soluble non-equilibrium system: The asymmetric simple exclusion process. *Phys. Rep.* **301**, 65 (1998).
- Schütz, G. M. [Exactly solvable models for many-body systems far from equilibrium]. *Phase Transitions and Critical Phenomena* [Domb, C. & Lebowitz, J.L. (ed.)][1–251] (Academic Press, London, 2000).
- Blythe, R. A. & Evans, M. R. Nonequilibrium steady states of matrix-product form: a solver's guide. *J. Phys. A* **46**, R333 (2007).
- Chou, T., Mallick, K. & Zia, R. K. P. Non-equilibrium statistical mechanics: from a paradigmatic model to biological transport. *Rep. Prog. Phys.* **74**, 116601 (2011).
- Evans, M. R., Foster, D. P., Godreche, C. & Mukamel, D. Spontaneous symmetry breaking in a one dimensional driven diffusive system. *Phys. Rev. Lett.* **74**, 208 (1995).
- Evans, M. R., Kafri, Y., Koduvely, H. M. & Mukamel, D. Phase separation in one-dimensional driven diffusive systems. *Phys. Rev. Lett.* **80**, 425 (1998).
- Kafri, Y., Levine, E. & Mukamel, D. Criterion for phase separation in one-dimensional driven systems. *Phys. Rev. Lett.* **89**, 035702 (2002).
- Arndt, P. F., Heinzel, T. & Rittenberg, V. First-order phase transitions in one-dimensional steady states. *J. Stat. Phys.* **90**, 783 (1998).
- Adams, D. A., Schmittmann, B. & Zia, R. K. P. Coarsening of “clouds” and dynamic scaling in a far-from-equilibrium model system. *Phys. Rev. E* **75**, 041123 (2007).

- Krug, J. Boundary-induced phase transitions in driven diffusive systems. *Phys. Rev. Lett.* **67**, 1882 (1991).
- Popkov, V. & Schütz, G. M. Steady-state selection in driven diffusive systems with open boundaries. *Europhys. Lett.* **48**, 257 (1999).
- Kolomeisky, A. B., Schütz, G. M., Kolomeisky, E. B. & Straley, J. P. Phase diagram of one-dimensional driven lattice gases with open boundaries. *J. Phys. A* **31**, 6911 (1998).
- Hager, J. S., Krug, J., Popkov, V. & Schütz, G. M. Minimal current phase and universal boundary layers in driven diffusive systems. *Phys. Rev. E* **63**, 056110 (2001).
- Parmeggiani, A., Franosch, T. & Frey, E. Phase coexistence in driven one-dimensional transport. *Phys. Rev. Lett.* **90**, 086601 (2003).
- Evans, M. R., Kafri, Y., Sugden, K. E. P. & Tailleur, J. Phase diagrams of two-lane driven diffusive systems. *J. Stat. Mech.* **P06009** (2011).
- Harris, R. J. & Stinchcombe, R. B. Ideal and disordered two-lane traffic models. *Physica A* **354**, 582 (2005).
- Reichenbach, T., Franosch, T. & Frey, E. Exclusion processes with internal states. *Phys. Rev. Lett.* **97**, 050603 (2006).
- Juhász, R. Weakly coupled, antiparallel, totally asymmetric simple exclusion processes. *Phys. Rev. E* **76**, 021117 (2007).
- Jiang, R., Hu, M. B., Wu, Y. H. & Wu, Q. S. Weak and strong coupling in a two-lane asymmetric exclusion process. *Phys. Rev. E* **77**, 041128 (2008).
- Jiang, R., Nishinari, K., Hu, M. B., Wu, Y. H. & Wu, Q. S. Phase separation in a bidirectional two-lane asymmetric exclusion process. *J. Stat. Phys.* **136**, 73 (2009).
- Cai, Z. P. et al. Asymmetric coupling in multi-channel simple exclusion processes. *J. Stat. Mech.* **P07016** (2008).
- Tsekouras, K. & Kolomeisky, A. B. Inhomogeneous coupling in two-channel asymmetric simple exclusion processes. *J. Phys. A* **41**, 095002 (2008).
- Popkov, V. & Peschel, I. Symmetry breaking and phase coexistence in a driven diffusive two-channel system. *Phys. Rev. E* **64**, 026126 (2001).
- Georgiev, I. T., Schmittmann, B. & Zia, R. K. P. Anomalous nucleation far from equilibrium. *Phys. Rev. Lett.* **94**, 115701 (2005).
- Melbinger, A., Reichenbach, T., Franosch, T. & Frey, E. Driven transport on parallel lanes with particle exclusion and obstruction. *Phys. Rev. E* **83**, 031923 (2011).
- Schikmann, C., Appert-Rolland, C. & Santen, L. Shock dynamics of two-lane driven lattice gases. *J. Stat. Mech.* **P06002** (2010).
- Shi, Q. H., Jiang, R., Hu, M. B. & Wu, Q. S. Strong asymmetric coupling of two parallel exclusion processes. *J. Stat. Phys.* **142**, 616 (2011).
- Ezaki, T. & Nishinari, K. Exact solution of a heterogeneous multilane asymmetric simple exclusion process. *Phys. Rev. E* **84**, 061141 (2011).
- Hinsch, H. & Frey, E. Bulk-driven nonequilibrium phase transitions in a mesoscopic ring. *Phys. Rev. Lett.* **97**, 095701 (2006).
- Popkov, V., Rakos, A., Willmann, R. D., Kolomeisky, A. B. & Schütz, G. M. Localization of shocks in driven diffusive systems without particle number conservation. *Phys. Rev. E* **67**, 066117 (2003).

Acknowledgments

This work is funded by the National Basic Research Program of China (No.2012CB725404), the National Natural Science Foundation of China (Grant Nos. 71371175 and 71171185).

Author contributions

R.J. and M.B.H. conceived and designed the research, Y.Q.W., R.J. and A.B.K. performed the research, Y.Q.W. and R.J. wrote the paper, all authors discussed the results and commented on the manuscript.

Additional information

Competing financial interests: The authors declare no competing financial interests.

How to cite this article: Wang, Y.-Q., Jiang, R., Kolomeisky, A.B. & Hu, M.-B. Bulk induced phase transition in driven diffusive systems. *Sci. Rep.* **4**, 5459; DOI:10.1038/srep05459 (2014).



This work is licensed under a Creative Commons Attribution-NonCommercial-ShareAlike 4.0 International License. The images or other third party material in this article are included in the article's Creative Commons license, unless indicated otherwise in the credit line; if the material is not included under the Creative Commons license, users will need to obtain permission from the license holder in order to reproduce the material. To view a copy of this license, visit <http://creativecommons.org/licenses/by-nc-sa/4.0/>